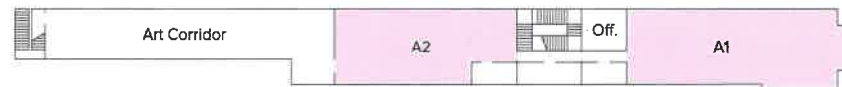


FIRST FLOOR



SECOND FLOOR

- Toilets
- (M) Male
- (F) Female
- (D) Disabled
- Art
- Dance
- English
- Film & Media
- IT/Computing
- Languages
- Psychology
- Maths
- Religious Studies
- Science
- Sixth Form



School Map



GROUND FLOOR

- | | | | | |
|---|--------------------------|---|---------------------------------|--|
| ■ Reception/
Main School Office | ■ Drama | ■ Maths | ■ Science | ■ Technology |
| ■ Toilets
(M) Male
(F) Female
(D) Disabled | ■ Geography | ■ Music | ■ Sixth Form
(a) Photography | 4) Art Textiles
7) Future Tech
Learning Studio
8) Food Technology |
| | ■ Health and Social Care | (a) Recording Studio
(b) Drum Room
(c) Music Room | | |
| | ■ History | | | |